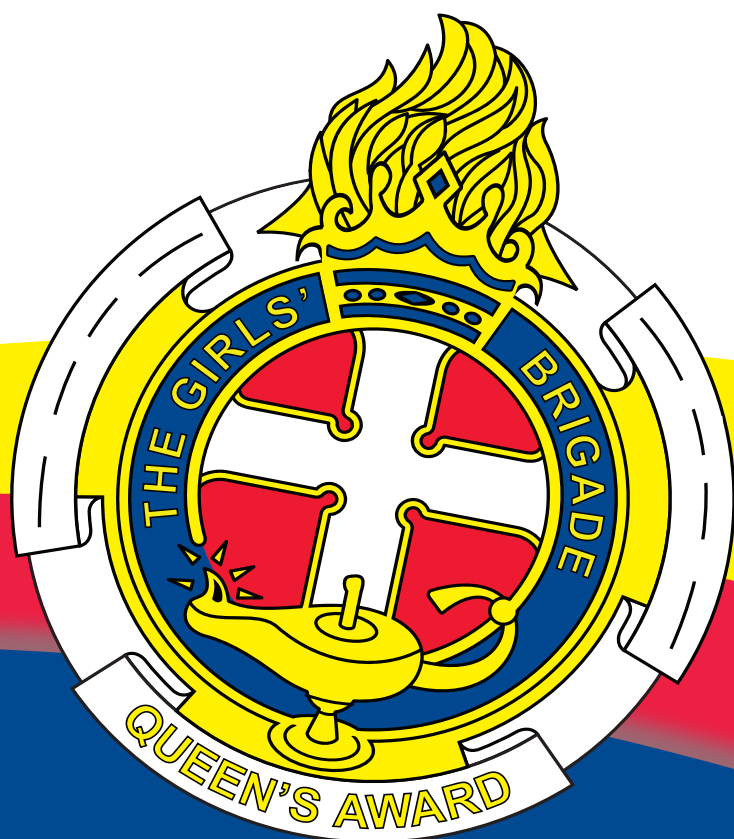


Girls' Brigade Northern Ireland

The Queen's Award

Candidate Guide

March 2025 entry



CONTENTS

Welcome to the Queen's Award	2
Frequently asked questions	3
How do I qualify and apply?	4
Syllabus overview	5
Key dates for 2025 candidates	8
Award elements	
Spiritual development	10
Service - company and community	12
Project assignment	14
Initiative tests	21
Study paper	22
Final interview	23
Appendix 1	25

WELCOME TO THE QUEEN'S AWARD

Welcome to the Queen's Award!

We are delighted you are considering applying to complete the Queen's Award. The Queen's Award gives you the chance to take new opportunities and try new experiences, to challenge and stretch yourself, to have fun and make new friendships and relationships as well as grow in faith and confidence.

A little bit of history.....the Queen's Award is the highest award in GB and was instituted at the first Brigade International Council in September 1968. It is an international award, completed in GB companies all around the world with over 1,200 young women from GBNI achieving their Queen's Award to date.

The Queen's Award syllabus has six different elements, each designed to give you new experiences and skills. We know that you may feel that with school/college and work you are not sure how the Queen's Award will fit in, but be assured that with planning and support from your GB company, family and friends you WILL be able to manage your time and achieve the award. We are all cheering you on and are excited to journey with you on this next amazing challenge.

We have included a few Bible verses below to help encourage you :

"I do not mean that I am already as God wants me to be. I have not yet reached that goal, but I continue trying to reach it and to make it mine. Christ wants me to do that, which is the reason He made me His."
Philippians 3:12 NCV

"When a person's steps follow the Lord, God is pleased with his ways. If he stumbles, he will not fall, because the Lord holds his hand."
Psalm 37:23-24 NCV

FREQUENTLY ASKED QUESTIONS



Here are some questions you might be thinking or need answers to before applying for the Queen's Award:

a. *How long does it take to complete the award?*

It takes a minimum of two years to complete the award. However, you may take longer as long as you have completed your final interview by your 25th birthday. At present, interviews take place in March/April each year.

b. *What support should I expect from my Captain/Officer in Charge?*

Your Captain/Officer in Charge will meet with you regularly to ensure that you are progressing well throughout the award. If you have any difficulties it is important you chat things over with in these meetings and you can also contact headquarters for advice. Please remember, it is your award, not your Captains, but she will be able to support and guide you when needed.

c. *How do I keep track of all the deadline dates?*

All the dates you need to know are listed in page 8 of this pack. We suggest you write them into your diary along with a few reminders a couple of weeks before the actual due date. You could also tear out page 8 and put it up somewhere in your room to remind you. Both you and your Captain/Officer in Charge will receive letters from headquarters to remind you when work is due for submission. Just a pointer, try to meet with your Captain/Officer in Charge for half an hour once a month; this should help you keep on top of the workload.

d. *How regular is regular?*

You are asked to attend church regularly but what is meant by regularly? The award asks that you have a minimum of 22 weeks attendance at company and a minimum of 44 weeks attendance at Sunday worship for each year participating in the award. If for whatever reason you find you are not able to meet this requirement, please chat with your Captain/Officer in Charge.

e. *I have decided to go to university and will not be able to attend on company night or Sunday worship?*

If you are hoping to go to university during the time you will be working for the award it may still be possible for you to continue. You may be able to complete the award within another company and attend another church close to university. Please contact GB Headquarters as soon as possible for further information.

f. *Who do I contact if I have a query?*

If you have any queries regarding the Queen's Award or if you need advice, do not hesitate to contact Emma Ross at Girls' Brigade headquarters.

By telephone (028) 9454 8054
By email queensaward@gbni.co.uk

How do I Qualify?

Applications to the Queen's Award are welcome from all GB girls but there are set criteria that must be met :

Age

To start the award in March 2025 your birthday must be between April 2002 and February 2010. You cannot take the final assessment interview before you reach your 17th Birthday or after your 25th Birthday.

Information Evening/Webinars

Information Sessions/Webinars are held each year in October and November. The sessions are designed to give an overview of the Queen's Award programme for all girls, leaders and parents as well as the opportunity to ask questions. If you attend and decide but not to apply for that year, you does not have to attend another evening in the next session.

Brigader brooch

You will continue to work towards and need to have completed your Brigader Brooch before you come to your final interview.

Attendance awards

At the time of application you should hold both company and church attendance awards for the year prior to application (2023/24 session for starting in March 2025). For full details see the Queen's Award regulations on GBNI website www.gbni.co.uk

HOW DO I APPLY?

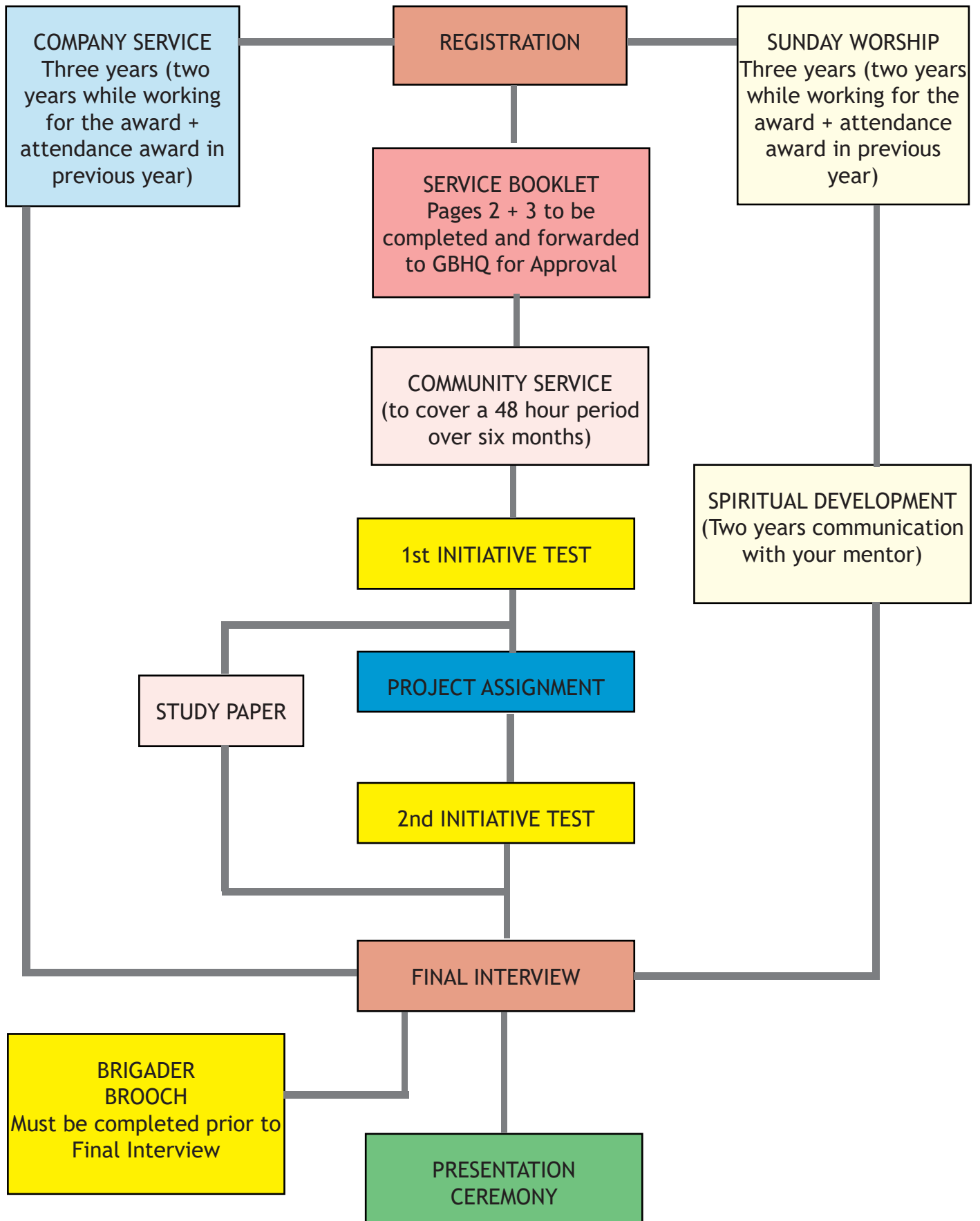
Applications to the Queen's Award should made online on the GBNI website. Applications must be approved by the GB Captain and the girl's Minister. Payment can be made at the time of application by the candidate or by the GB Captain at the Captain approval stage.

If required, forms for postal applications can also be downloaded from the Leaders' Section of the GBNI website. If posting, please ensure correct postage is paid to avoid delay. Postal applications can be paid by cheque or BACS. Please contact GBHQ for BACS details if required.

Regardless of application method, the closing date for 2025 applications is Monday 20th January 2025 @ 5pm. Unfortunately we are unable to accept applications received after the advertised closing date.

SYLLABUS OVERVIEW

The diagram may help to give you an overview of the Award



SO, WHAT DOES THE QUEEN'S AWARD INVOLVE?

THE SIX AWARD ELEMENT AIMS

There are six different elements of the Queen's Award to be completed; each with their own specific aim and challenges.

1. **SPIRITUAL DEVELOPMENT** (See page 10 for further details)

Aim: To encourage girls to make a personal commitment to Jesus Christ as their Lord and Saviour.

2. **SERVICE (COMPANY AND COMMUNITY)** (See page 12 for further details)

Company

Aim: To help girls to develop Girls' Brigade leadership skills and encourage them to accept leadership responsibilities, both individually and as part of a team.

Community

Aim: To encourage girls to develop and maintain a long term commitment to serving the needs of others in the wider community outside their normal social circle.

3. **PROJECT ASSIGNMENT** (See page 14 for further details)

Aim: To develop the skills of research, presentation and discipline to complete an assignment to a high standard in a particular area of interest.

4. **INITIATIVE TESTS** (See page 21 for further details)

Aim: To help girls develop qualities of reliable leadership and initiative and to appreciate all that is involved in accepting responsibility for the completion of a specific task.

5. **STUDY PAPER** (See page 22 for further details)

Aim: To encourage candidates to expand their general knowledge and understanding of current issues.

6. **FINAL INTERVIEW** (See page 23 for further details)

**Key Dates..... please tear out this page and put in your diary
or on a noticeboard**

What?	When?	Info
Application form	20th January 2025.	Closing date for new applications.
Admission	Start of February 2025.	Applicants will receive their candidate pack in early February ahead of 1st March start.
Mentor	No later than end March 2025.	Identify a suitable mentor and forward contact details to GBHQ. Mentoring must not start until confirmation received from GBHQ.
Record book	Ongoing	Record books need to be forwarded to GBHQ for approval on project and community service before starting.
Spiritual development	Ongoing	You should meet regularly with your mentor and be actively involved in your church life. This is monitored through the church involvement section of your record book.
Company service	Ongoing	To be completed throughout the time working towards the award.
Community service	Ongoing	You should complete a minimum of 48 hours whilst working for your award.
1st initiative test	Oct/Nov 2025	You will have six/eight weeks to complete task.
Study paper	Choice of Nov 2025 Feb 2026 Nov 2026 or Feb 2027	A two hour paper completed either in year one or two.
Completed project	30th Sept 2026	All completed projects should be in GBHQ by this date.
2nd initiative test	Oct/Nov 2026	You will have six/eight weeks to complete task.
Final interview	Mar/Apr 2027	The last stage of your Queen's Award programme.
Presentation ceremony May 2027	You will receive your Queen's Award certificate at a presentation ceremony (venue TBC). You will have the opportunity to invite your guests to join you as you celebrate achieving your Queen's Award.	

IT'S ALL IN THE DETAILS.....By now you should have an idea of the different elements you will be completing as part of your Queen's Award. Keep reading to find out more details about each section.

1 - SPIRITUAL DEVELOPMENT

As a Christian organisation The Girls' Brigade seeks to encourage you to make a personal commitment to Jesus Christ as your Lord and Saviour.

In this section we ask you to :

1. regularly attend Sunday worship,
2. actively undertake a role in the wider life of your church and
3. engage with a mentor.

1. Regular attendance at Sunday worship

You will receive a church attendance record card to help you keep track of your attendance at Sunday worship. You should have a minimum of 44 weeks attendance for each year working towards your Queen's Award in order to fulfil this element. Your Sunday worship card can be signed by a Minister, church elder or someone else within your church leadership team.

Remember Sunday morning worship, Sunday School, Bible class, Sunday evening worship and youth fellowship all count towards Sunday worship attendance. *A maximum of four online services can be counted towards the overall 44 required.*

2. Actively undertake a role in the wider life of your church

Church life is more than Sunday worship, we would encourage you to chat with your church leaders and see how you can serve and play a part in the life of your church. Maybe you can help in Sunday school, be part of the praise band, help at youth club, look after the AV during services or be part of the welcome team. Each church is different in the opportunities offered but we are sure you will be able to find something that suits. As well as getting your Sunday worship card signed, there is also space in your record book to make a note of what additional activities you have been involved with. At the end of each year, you will complete a more detailed report which should be signed by a church representative.

3. Mentor

While these are important, what is of even greater importance is your personal journey of faith. Each of you will be at a different stage in this journey, some may not even have taken the first step, so it is vital that we encourage and support you while you work for the Queen's Award.

Girls completing the Queen's Award often tell us the mentor is one of the highlights for them; their support, encouragement and guidance is invaluable.

We ask you to identify a mentor who can act as a support throughout your Queen's Award and everyday life.

Who should I pick?

The choice of mentor is entirely up to you. They should be someone whom you trust and respect, and with whom you feel you can be completely open as you try to discover more about what it means to be a follower of Christ and your response to that commitment. You should identify an appropriate person who is willing to fulfil this role eg. your Minister/Chaplain, an elder within the congregation, GB leader, youth leader, or house group leader but they must not

be related to you.

Together, you should agree a pattern of meeting which should continue throughout the duration of the award and this should be recorded in your record book. Your mentor will be required to complete their comments on a monthly basis and at the end of each 12 month period, sign the record book, giving an outline of your involvement and development within the Christian faith.

Mentor registration

A Mentor Pack is provided for all prospective mentors. A pack will be sent directly to you as part of your own Queen's Award welcome pack for forwarding to your chosen mentor. Additional copies can also be downloaded from the Leaders' Section of the GBNI website as needed. Please pass on this pack to your mentor as soon as possible as mentoring cannot start until the mentor registration form has been completed and confirmed as received in GBHQ.

Completed mentor forms must be received in GBHQ before 31st March.

The mentor information pack contains:

- * Overview of mentor role and expectations
- * Mentor registration form
- * Mentor process risk assessment

Due to the nature of the mentor relationship, the Queen's Award team strongly recommend that this person is female. Your mentor needs to be over 18 and if you are under 18 years of age, your mentor must complete an AccessNI check (to be arranged by your GB Company). Contact GBHQ for more details.

2 - SERVICE (company and community)

COMPANY SERVICE

Working in your GB company will give you the chance to develop leadership skills and undertake different responsibilities both individually and as part of a team.

You will keep a record of your company service each week, which should be signed by your leader in charge of section/activity. The record can be a really good reminder of everything you have planned and helped out with at GB.

There are many ways in which you can serve in your company. Please try to rotate your activities each week. If you are not the only girl working towards the award in your company, together you may like to decide to make a weekly rota of the various activities that need help so that you do not double up. Remember to ask your Captain first.

The following are a few examples:

- Helping an officer to teach craft to the Junior section.
- Story-telling to the explorer section.
- Take an exercise class with the junior section.
- Run the company tuck shop.
- Help clean up at the end of your company night.



Before your final interview, you will need your Captain to complete a brief report on your performance and attitude while serving in the company.

All girls aged 18 years and over must be AccessNI checked when working with children. For more details see appendix 1.

COMMUNITY SERVICE

As well as working in your GB company, the Queen's Award will give you the chance to serve and reach out into your community. We all live as part of a community and it is so valuable to be able to play your part in wider society on a voluntary basis. As part of your Queen's Award you will complete at least 48 hours community service over during the time working for your award. Please note your community service must span a minimum time frame of six months and can be completed at anytime during the two years.

The choice of community service is again up to you; have you a passion to help animals, to work with young children, to help the elderly, is there a particular charity you have an association with etc.

Examples include:

- Charity shop assistant
- Helping with disabled children
- Hospital visiting
- Children's playgroup
- Elderly care home helper
- Helping with 'Riding for the Disabled'
- Reading to a blind person
- Community summer scheme

- Gardening for an elderly person (not previously known to you)
- Summer outreach

The community service section in your record book should be signed by the person supervising your service each time you attend. When you complete the required hours, you should ask your community service supervisor to complete the community service report in your record book. You don't have to stop your community service once you have completed 48 hours, girls in the past have enjoyed their community service so much and built such good relationships that they have continued to work there, which is fantastic!

Can I use summer outreach/mission trip for community service?

Yes you can use summer outreach or a mission trip. You will certainly fulfil the 48 hours during your outreach or trip but on top of this we would ask you to keep a diary of your preparation, involvement on the trip and follow up which must cover at least a six month period. All forms of applications, insurance, etc. should be included in the diary.

What if I need to change my service?

You may request to change your community service at any time by writing to the Queen's Award team for approval. However, please remember we cannot accept work carried out before approval of the change has been confirmed.

Please remember :

If you are under 18 years of age you must always be supervised by an adult. Some community service providers will require an AccessNI check - See Appendix 1 for details.

Unfortunately, community service given during school, university/college or work time, or as part of a vocational training, or for a Brigader brooch, leadership training or Duke of Edinburgh's Award can't be used for your Queen's Award.

3 - PROJECT ASSIGNMENT

Your project assignment is one of the major parts of your award in terms of time and work commitment but it is also one of the award elements girls enjoy completing the most.

What type of project can I choose?

Everyone has different skills, interests and talents. You can choose which project assignment type appeals to you most but why not give something new a try?

You can pick from the following eight project types :

1. written project
2. physical activity
3. creative writing
4. visual media - photography
5. visual media - documentary/film making
6. music
7. creative/art
8. design technology

Each project type has its own set of guidelines and requirements but there are a number of points that relate to all projects - the ground rules.

The ground rules

1. All topics must be in keeping with the aim of the Girls' Brigade and the Queen's Award.
2. You must get topic approval from the Queen's Award team before starting your project.
3. You can ask to change your project assignment at any time by writing to the Queen's Award team for approval. However, please remember we cannot accept work carried out before approval of the change has been confirmed.
4. The internet and text books are useful resources but please do not copy the documents as plagiarism is a serious offence. Any work that is seen to be copied from resources will be returned for re-submission. If you are quoting text throughout your project, please remember to give ownership to the author. Only 5% of your overall project can be made up of quotations.
5. All work submitted for the Queen's Award must be your own work and must be only for the Queen's Award. You can't submit work already completed for GCSE, A Level or university.
6. Projects cannot be based solely on your life and/or experiences (with the exception of physical activity and music projects)

You will notice that regardless of type, all project genres have an element of written material. This written work should contain :

1. Your name.
2. Content must adhere to title and category approved.
3. Indicate the reason for choosing this particular project.
4. Title page, contents table, page numbers and word count
5. Acknowledgements and bibliography.
6. A proper balance of words and images. Images must be neatly labelled and be relevant to the text.

PROJECT TYPES GUIDELINES AND CRITERIA

Written project

Submit a carefully prepared written project on A4 paper to be contained in an A4 project file.

Please note :

- The project should comprise at least 6000 words (but no more than 7000 words).
- The project should be typed or word processed, and should feature a proper balance of words and images (eg. photographs, diagrams, images etc).
- You must show evidence that the project is your own work and not copied from other sources. Quotations, which must be clearly acknowledged, may be included.
- It may be on any subject of interest to the candidate, which does not conflict with the aim of The Girls' Brigade.

Example written project topics studied in previous years include :

History of GB and BB in Holywood

The Jewish Holocaust

Olympics

The role of women throughout history

Fashion throughout history

Music

Have you an interest in music and learning more about different music styles? Maybe a music based project is for you?

All three stages below must be completed.

1. Over a period of one year you are required to devote a minimum of 10 hours focussed listening (free from distraction) to music from a variety of genres eg. classical, jazz, musical theatre, pop etc. You must complete a diary detailing your reasons for selection, comparison between genres and how future listening may be impacted as a result (minimum 1200 words).
2. Attend two concerts, musical event, recital etc of differing musical styles and submit a written evaluation on each. Consideration should be given to the type of event, the performance given and how you were engaged as the listener (minimum 1200 words).
3. Create a case study of a famous composer, musician or performer. You should include reasons for your choice, details of their life, information about their major works or performances and facts which may have had an impact on their work (1200 words minimum with appropriate images).

Physical Activity

Do you enjoy sport or perhaps you are looking for a new physical challenge? You might want to consider a physical activity project - please remember your chosen sport should be a new one to you; you should not be already playing or competing in your choice.

Complete stage A and either stage B or C

- a. Submit a detailed diary/account of a personal weekly involvement in a physical activity over a period of 52 weeks. This may include a winter and /or summer activity - evidence of attendance, training and participation in competitions must be identified (1200 words).
- b. Attend two major competitions/event associated with the activity/sport(s) you have chosen - include reports of attendance at each detailing factual evidence about the sport, participants etc. (1200 words).
- c. Write a detailed account of interests in the career of one or two leading personalities, in a physical activity, over the period of one year (1200 words).

Creative Work

Submit a large piece of creative work with a portfolio of associated written details (1000 words) for one of the following:

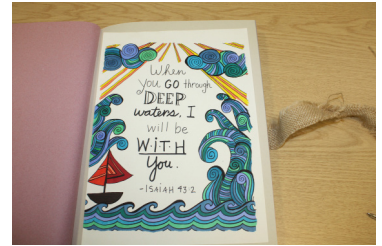
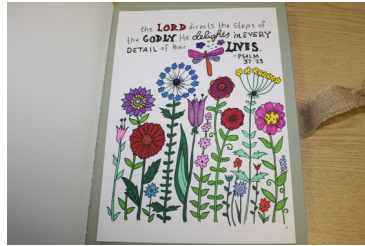
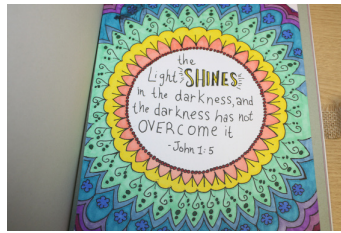
- a. Art and Design
- b. Creative Needlework (minimum of A4 size)

The portfolio should include photographs of the item at different stages, any sketches/working drawings, description of techniques used and a brief description of why the project was selected.

To help you with ideas, girls have completed projects involving mosaicing, painting, needlework, upcycling furniture, cross stitch, knitting, paper quilling, decoupage, cake decorating, quilting, embroidery, jewellery making etc.

This list is by no means exhaustive, why not spend a bit of time thinking about what you would like to make? Your only limit is your imagination!

Some examples of creative project work submitted in previous years :



Creative Writing

Do you love to write? Have you a flair for poetry or creative writing?

Complete one of the following : poetry, musical or play.

Poetry

You will show a genuine knowledge of, interest in and love of poetry. This should be demonstrated by completion of both steps 1 and 2 below.

1. Personal appreciation of poetry -
 - a) Using three poems as examples, demonstrate three different verse forms choosing from, for example, ballad, sonnet, dramatic monologue, epic, ode, elegy, straight lyric or free verse.

Matters to be considered include an appreciation of:

- What is the form of the poem?
- How does the metre, rhyme (or lack of it), rhythm, punctuation etc. enhance the poem?
- How do the pauses work?
- How do symbolism, use of allegory, metaphor, alliteration, irony, rhetoric and other such devices help us to become intellectually, imaginatively and sensually involved in the poem?

b) An appreciation of the works of three major poets showing how their social backgrounds influenced the poets' work. One poet should be from each of the following periods: 16 & 17th century, 18th & 19th century, 20th & 21st century.

c) Attend at least one poetry reading by a published poet. (Details of forthcoming readings can be obtained from local libraries, universities etc. including the Seamus Heaney Centre at Queen's University). Simply listen and enjoy. If possible get the poet to sign and date something to show that you have been there (and to have something to remember it by!)

2. Drawing on what you have absorbed and reflecting on poetic techniques studied, give three examples of your own poetry.

Musical

Write a minimum of three songs and compose the music which must be submitted on a CD. You must include a score and lyrics for each song in your write-up. You should also submit a synopsis of the storyline, details of the characters, costumes, staging, and props must also be included.

Play

Write a play of a minimum 20 minutes or two short plays totalling 20 minutes. The completed script and details of characters, costumes, staging, props and costing must be included.

Please note: Your piece must be suitable for public performance and be your own work. Your

selected topic must not conflict with the aims of The Girls' Brigade.

Design Technology

The emphasis is on creativity and involvement in a major work in any medium. It involves the design (concepts, sketches and working drawings) and the making of an article. It should contain written work on your choice (1000 words).

Suggestions include:

- Woodwork
- Metalwork
- Pottery
- Doll/toy-making
- Carving
- Fabric
- Sculpture
- Dressmaking

Examples of previously submitted projects :



Dollhouse

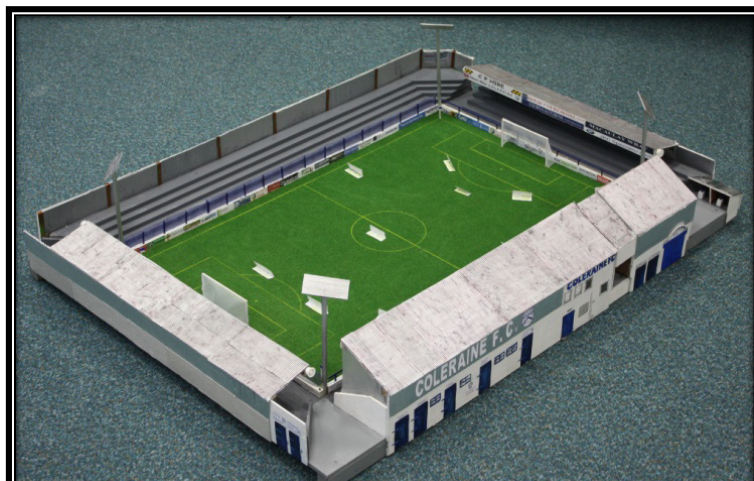


Model making

Carving and wood burning



Giant jigsaw



Visual Media - photography or film/documentary making

The visual media genre allows you to learn, develop and showcase your skills in the field of photography or film/documentary making.

Photography

You should complete all three steps.

1. Research the development of a particular genre of photography eg. photo journalism in the beauty/fashion industry and its impact on today's photography; a social documentary for example nature/natural world or architecture - the developing shapes of the modern city skylines etc. (Minimum 2000 words).
2. Problem solving - provide three examples of original photographs each with a different problem/defect eg. red eye, poor colour balance/contrast, incorrect focussing. Identify the problem and explain which tools/processes are required to correct the problem. Provide a corrected version of each of the original photographs.
3. Portfolio of photographs - provide a portfolio containing at least 10 photographs which illustrate a chosen theme, and a diversity of approach in developing it. Photographs for the completed portfolio should be mounted on card together with a brief explanatory caption and should be presented in an appropriate display folio. Photographs should be at least 7 x 5 inches in size.



Documentary/film making

You should complete all three steps.

1. Research documentaries, provide examples that inspired you and submit an account of your findings. (Minimum 700 words).
2. Complete a statement of intent (minimum 300 words) which should be accompanied with a storyboard showing how the final submitted documentary was planned.
3. Your final product should be between ten to twelve minutes in length, it should develop a theme and involve other people. All filming, recording and editing should be your own work. The final film will be assessed on sound, lighting, camera work (variety of angles and length of shots) and editing. The final film must be shot landscape. The final copy should be submitted on a USB drive compatible with PCs.

4 - INITIATIVE TESTS

Initiative tests are short time scale tasks designed to help you to develop qualities of reliable leadership and initiative. You will be asked to complete two initiative tests as part of your award. You will have six-eight weeks in which to complete each test.

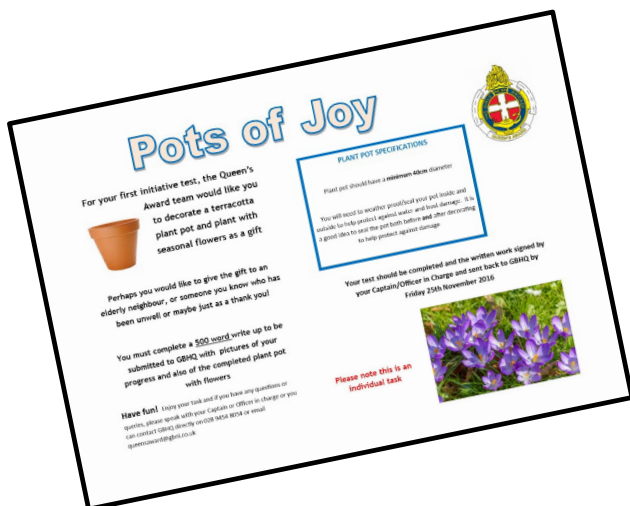
Some tasks are practical whilst others will require you to undertake a short project (not more than four sides A4).

The first test will take place during October/November of year one and the second during October/November of year two.

Examples of tests that have been set previously include:

- Arrange and prepare a meal for six people (to include your Captain)
- Organise a church clean-up
- Design a new Queen's Award certificate
- Organise a fundraising event for charity of your choice
- Research and deliver an online safety awareness presentation to a section in your company
- Decorate and plant a terracotta plant pot and gift to someone in your community
- Knit a comfort mitt for a dementia patient
- Make a pillowcase dress for children in GBNI supported school in Kisoro, Uganda

After completing your initiative test, you will be asked to complete a short (500 words) write up of your task to be submitted to GBHQ. The Queen's Award team will assess all initiative tests.



Queen's Award initiative test

Your task is to design and create a **Bible storysack** suitable for use with young children (aged 3-7 years).

Your storysack should contain a range of items related to your chosen story:

- a copy of the story (either as a book or printed copy)
- a game or puzzle
- figures or characters
- crayons and colouring sheets
- special objects or items to help tell your chosen story
- guidance sheet for leaders to suggest ways to use the story sack

Examples....

Key Points :

- Your maximum budget is £10 for the storysack and all contents.
- Think about what you could use for a storysack bag - ideally this will be washable and durable.
- When filling your storysack think about items that will be age appropriate and safe for young children.
- Remember this is an individual task.
- You must include photographs of your story sack and contents as part of your written report.
- Your written report must be word processed/typed, be on A4 paper and have a minimum word count of 500 words (include the total word count on your report).
- Your completed storysack and report must be given to your GB captain for submission to GBHQ no later than **Friday 24th November 2017**.

5 - STUDY PAPER

What is the study paper?

The study paper is a two hour written paper based on study paper notes that aims to broaden and increase your knowledge of current affairs. The paper is in two sections, Section A and Section B with 100 marks available in total.

What is Section A?

Section A is worth 80 marks and consists of questions based on topics detailed in the study paper notes such as Living in NI, Knowing my nation and Girls' Brigade knowledge. The study paper notes and practise questions can be downloaded from the GBNI website. An audio version is also available. A copy of the notes will be sent automatically to you by email once you book your study paper.

What sort of topics will I be asked about in Section A?

Section A topics will include knowing my nation (45 points), living in NI (10 points) and knowledge of the Girls' Brigade (25 points).

What is Section B?

Section B is worth 20 marks and consists of one short essay style question. Section B is not based on the study paper notes and will ask you for your personal opinion on a subject.

When and where will I sit the study paper?

Each GB session there are two study paper weeks, one in November and another in February. This means you have four different periods in which to complete the paper - you can choose which week suits you best. Once you have selected your preferred period, you should book your study paper online and request a study paper to be forwarded to your Captain/Officer in Charge. You will complete the paper in your own company during the chosen study paper week.

Who marks the study papers?

Study papers are marked by the Queen's Award Team.

What is the pass mark?

The overall paper pass mark is 60. You must also get a mark of at least 20 out of 25 under the Brigade Knowledge section of the paper to pass.

What happens if I do not pass my paper, can I resit?

If you do not reach both the minimum mark 20/25 in GB Knowledge and the overall 60 pass mark for the complete paper you will be given the opportunity to re-sit another paper. You can resit more than once, however, please remember if you select the 4th date to sit your study paper and do not pass the exam, you will have to defer to the following year to re-sit another paper.

What if I require assistance in order to sit my exam?

If you require any assistance in order to complete your paper or if you are entitled to additional time for exams please contact GBHQ when booking your paper.

6 - FINAL INTERVIEW

The last part of your Queen's Award will be the final interview. Interviews take place in March and April each year in GBHQ.

What happens at the final interview?

During your final interview you will be asked a few questions relating to your Queen's Award journey, your faith and church life as well as your plans for the future. There will also be a general discussion on your approach to life.

Who will interview me?

Your interview panel will consist of three members - the panels change each year but will generally be made up of members of the Queen's Award team, GBNI Executive, GBNI Brigade Council and others co-opted by the team.

What else happens at interview stage?

During your interview you will be asked to present a five minute presentation. The topic will be selected by the Queen's Award team and you will receive details of the topic at least four weeks before your interview date. You are free to use PowerPoint, prepare display boards, hand-outs and cue cards for your presentation.

When will I find out if I have passed my interview?

Interview results are sent as soon as possible after the interview date. Both you and your Captain will receive notification. If you are unsuccessful, don't worry, you will get the opportunity to redo your interview and all work completed to date.

PRESENTATION CEREMONY

The presentation ceremony marks your success in gaining the Queen's Award. It is held in May of each year and it is when you will be officially presented with your Queen's Award certificate. (The brooch should be presented at the annual display or a similar event within your company).



The venue changes each year and you will receive details of that year's presentation ceremony once you have successfully completed your award.

The presentation ceremony is a lovely opportunity for you to celebrate all the hard work, time and dedication you have put in to achieving the Queen's Award; you will receive guest tickets for family and friends and we are sure they will also enjoy the chance to congratulate and applaud you for your achievement.

We look forward to seeing you complete your award and potentially joining in the celebrations with you at the presentation ceremony in 2027!

Appendix 1 - Do I need to be AccessNI checked?

Whilst completing the service part of your Queen's Award you may be required to have an AccessNI check for both your company and community service.

Company service

If you are *under* 18 years of age, you are not required to be AccessNI checked for company service, however, you must always be supervised by an adult.

If you are *over* 18 years of age, for any company service being completed, you will need an enhanced disclosure check carried out through AccessNI. Speak to your Captain to arrange for this to be completed with your designated church representative.

Community service

If your community service meets the criteria of a regulated activity (definition below) you may be required to complete an AccessNI check. This may depend on where your community service will take place, your role and the protocols your service provider may have.

REGULATED ACTIVITY

“Regulated activity” involves those positions required to have access to children or vulnerable adults, in defined circumstances.

Definition of a vulnerable adult?

A vulnerable adult is a person who is aged 18 years or older and:

- is living in residential accommodation, such as a care home or a residential special school;
- is living in sheltered housing;
- is receiving domiciliary care in his or her own home;
- is receiving any form of health care;
- is detained in a prison, remand centre, young offender institution, secure training centre or attendance centre or under the powers of the Immigration and Asylum Act 1999;
- is in contact with probation services;
- is receiving a welfare service of a description to be prescribed in regulations;
- is receiving a service or participating in an activity which is specifically targeted at people with age-related needs, disabilities or prescribed physical or mental health conditions or expectant or nursing mothers living in residential care (age-related needs includes needs associated with frailty, illness, disability or mental capacity);
- is receiving direct payments from a local authority/HSS body in lieu of social care services;
- requires assistance in the conduct of his or her own affairs.

Aim of the Queen's Award is to encourage girls and young women to a personal commitment to the Lord Jesus Christ, while respecting other faiths; inspiring them to greater endeavour in service within the general community and to make a contribution to the worldwide concept of The Girls' Brigade.