

# Child Protection Policy

A summary guide for Parents and Guardians

Issued December 2017  
Amended January 2018



Spiritual



Physical



Educational



Service

# Child Protection Policy & Procedures

“We all have a legal duty to protect children from abuse or risk of abuse”

Extract from 'Co-operating to Protect Children' (Children (NI) Order 1995 Volume 6)

## Our commitment

Girls' Brigade NI is committed to providing a caring, friendly and safe environment for all of our members so that they can participate in a relaxed and secure atmosphere.

Our primary responsibility is the safeguarding of individual children and any concerns about their emotional or physical well-being must be addressed appropriately.

## The Role of Parents

The Child Protection Policy will be available to all parents from the GB Captain and a summary guide will be distributed every year.

Parents are asked to supply section leaders with the names of all persons who have permission to collect their child from their local GBNI company. They are asked to inform the section leader of any changes in this routine.

Parents are asked to brief GB about arrangements following any separation or divorce. Leaders need to be aware of legal responsibilities, agreed access or exclusion and any involvement of social services. Parents are encouraged to keep the GB company informed as necessary.

Parents will be made aware that leaders may on occasions have to help change girls' clothes when administering first aid, after toilet accidents, for display/parents evening and on other such occasions. The Girls' Brigade Intimate Care Policy applies.

## Categories of Abuse

**Neglect** is the failure to provide for a child's basic needs, whether it be adequate food, clothing, hygiene, supervision or shelter that is likely to result in the serious impairment of a child's health or development. Children who are neglected often also suffer from other types of abuse.

**Emotional Abuse** is the persistent emotional maltreatment of a child. It is also sometimes called psychological abuse and it can have severe and persistent adverse effects on a child's emotional development.

**Physical abuse** is deliberately physically hurting a child. It might take a variety of different forms, including hitting, biting, pinching, shaking, throwing, poisoning, burning or scolding, drowning or suffocating a child.

**Sexual abuse** is the actual or likely exploitation of a child to engage in sexual activities.

**Bullying** is deliberately hurtful behaviour, usually repeated over a period of time, where it is difficult for those bullied to defend themselves.

**Exploitation** is the intentional ill-treatment, manipulation or abuse of power and control over a child or young person; to take selfish or unfair advantage of a child or young person or situation, for personal gain.

Further, specific definitions of abuse and a number of examples of the resulting physical and behavioural signs, that may be indicators of abuse and exploitation, can be read in our full Child Protection Policy available from the GB Captain.

**Domestic Violence** - If we become aware of Domestic Violence, we will make a confidential referral to Women's Aid. Our main concern is the safety and wellbeing of individual children.

## Procedures for Dealing with Cases of Suspected or Disclosed Abuse

In line with advice from EA, the GB company will ensure that specific procedures are followed in the event of a leader becoming concerned about the abuse of a child. Emphasis will be placed on both early detection and swift intervention, but no leader will investigate directly and signs of possible abuse will not be considered by the GB company as proof.

## Agencies that offer help and support

### **Childline**

T: 0800 1111 (help for teenagers and children)  
[www.childline.org.uk](http://www.childline.org.uk)

### **Child Exploitation & Online Protection Centre**

[www.ceop.police.uk](http://www.ceop.police.uk)

### **Kidscape (bullying advice & child safety)**

[www.kidscape.org.uk](http://www.kidscape.org.uk)

### **NSPCC**

T: 0808 800 5000 (helpline for adults worried about a child)  
[www.nspcc.org.uk](http://www.nspcc.org.uk)

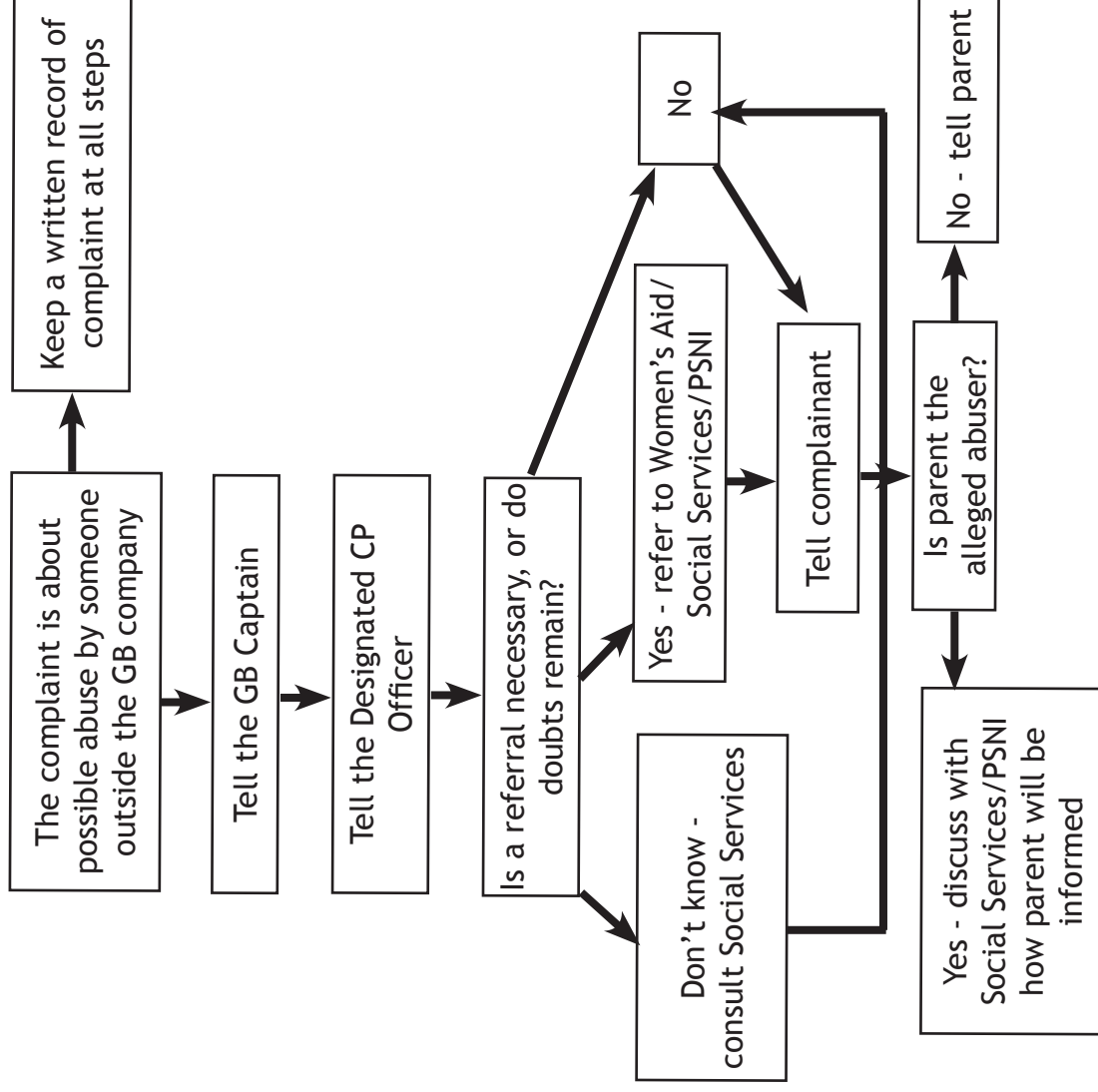
### **Think u Know (internet safety)**

[www.thinkuknow.co.uk](http://www.thinkuknow.co.uk)

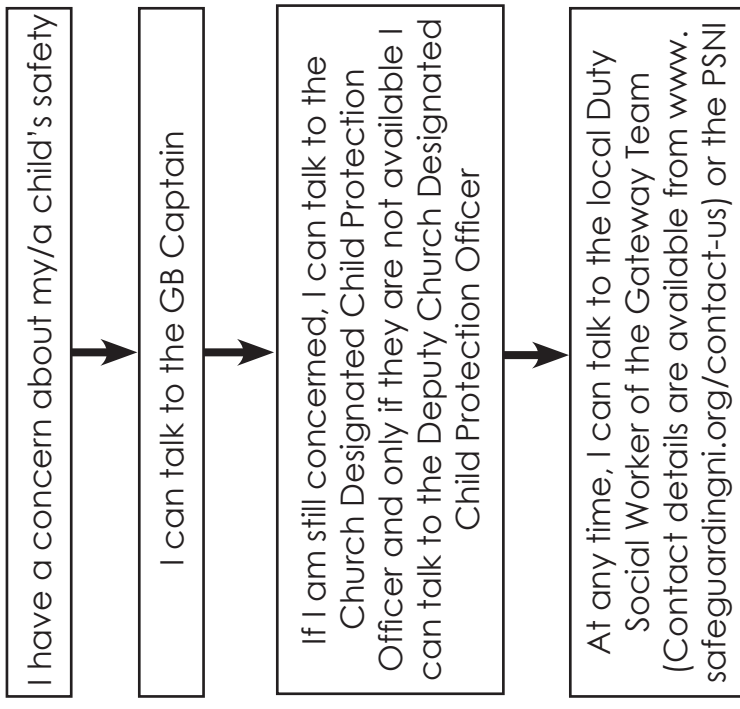
### **NI Anti-Bullying Forum (helpful resources)**

[www.endbullying.org.uk](http://www.endbullying.org.uk)

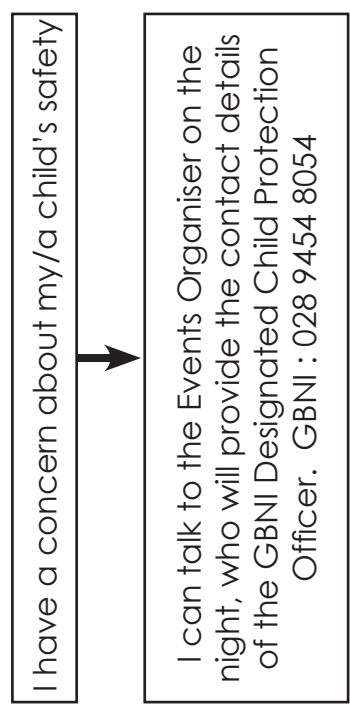
**Procedure where the GB company has concerns, or has been given information, about possible abuse by someone other than a leader.**



## How a parent can raise a child protection issue (report a concern) on a company night



## How a parent can raise a child protection issue (report a concern) at a GBNI Event



**If you have a complaint about any aspect of GBNI work. Please contact GB Headquarters on 028 9454 8054 (Press 2 for the office) for a copy of our full complaints procedure.**